

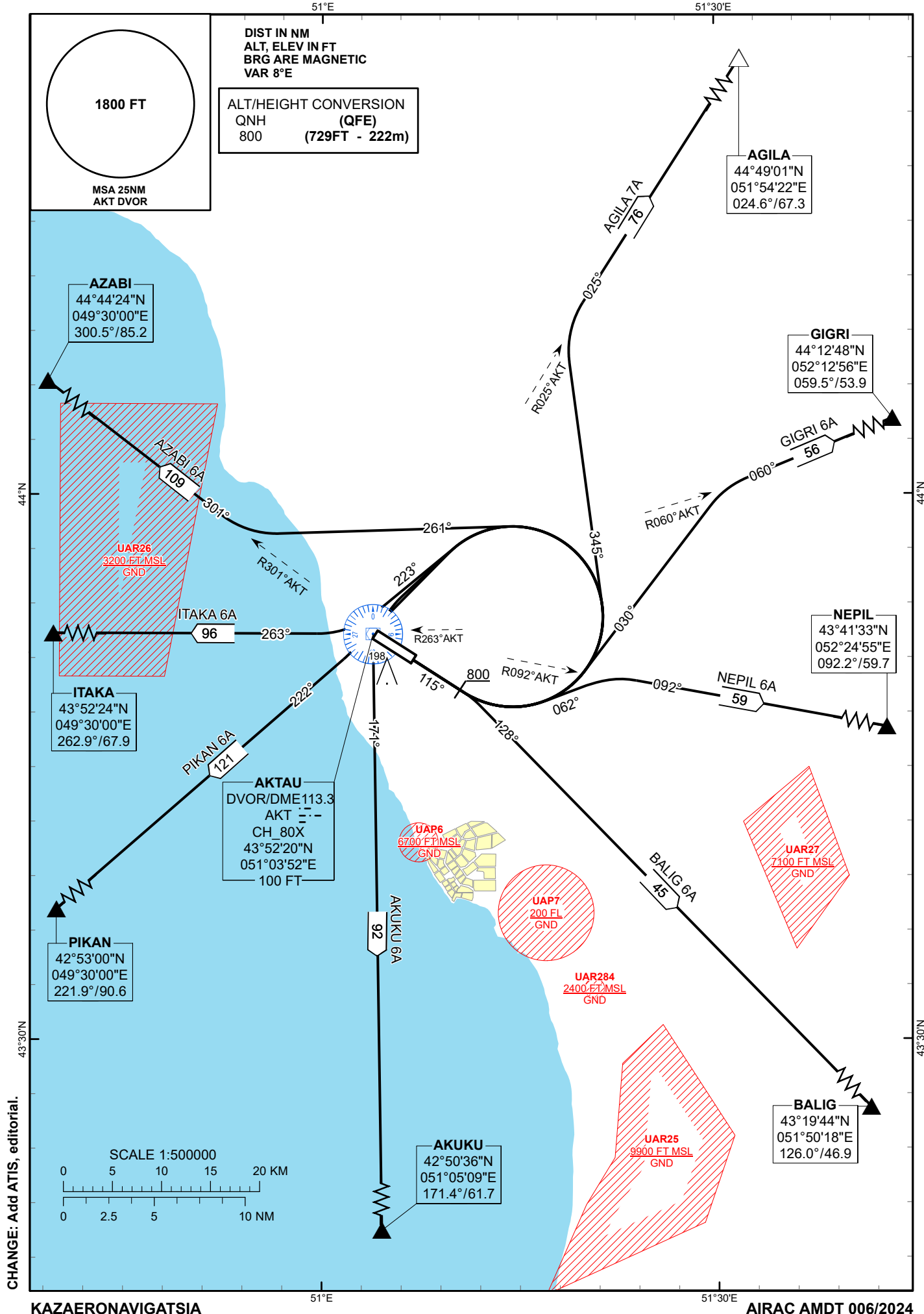
STANDARD DEPARTURE
CHART - INSTRUMENT
(SID) - ICAO

TRANSITION ALTITUDE
10000 FT

AKTAU TOWER 120.7
AKTAU ATIS (EN) 130.1
AKTAU ATIS (RU) 126.2

AGILA 7A AKUKU 6A AZABI 6A
BALIG 6A GIGRI 6A ITAKA 6A
NEPIL 6A PIKAN 6A

AKTAU
RWY 11



STANDARD DEPARTURE ROUTES – INSTRUMENT (SID) AKTAU RWY 11

AGILA 7A

After take-off climb straight ahead to 800 FT, turn LEFT on track 345° until intercept R 025°AKT, then proceed to AGILA (R024.6° D67.3 AKT).
Crossing FL at AGILA are by ATC.

GIGRI 6A

After take-off climb straight ahead to 800 FT, turn LEFT on track 030° until intercept R 060°AKT, then proceed to GIGRI (R059.5° D 53.9 AKT).
Crossing FL at GIGRI are by ATC.

NEPIL 6A

After take-off climb straight ahead to 800 FT, turn LEFT on track 062° until intercept R 092°AKT, then proceed to NEPIL (R092.2° D59.7 AKT).
Crossing FL at NEPIL are by ATC.

BALIG 6A

After take-off climb straight ahead to 800 FT, turn RIGHT on track 128°, then proceed to BALIG (R126.0° D46.9 AKT).
Crossing FL at BALIG are by ATC.

AKUKU 6A

After take-off climb straight ahead to 800 FT, turn LEFT to AKT, cross AKT at 5000 FT or above, after crossing AKT proceed on track 171° to AKUKU (R171.4° D61.7 AKT).
Crossing FL at AKUKU are by ATC.

PIKAN 6A

After take-off climb straight ahead to 800 FT, turn LEFT to AKT, after crossing AKT proceed on track 222° to PIKAN (R221.9° D90.6 AKT).
Crossing FL at PIKAN are by ATC.

ITAKA 6A

After take-off climb straight ahead to 800 FT, turn LEFT on track 223° until intercept R 263°AKT, then proceed to ITAKA (R262.9° D67.9 AKT).
Crossing FL at ITAKA are by ATC.

AZABI 6A

After take-off climb straight ahead to 800 FT, turn LEFT on track 261° until intercept R 301°AKT, then proceed to AZABI (R300.5° D85.2 AKT).
Crossing FL at AZABI are by ATC.